

# Medical Moments

## Creating Incomplete Accessions

This morning you received an iguana that arrived needing medical attention. Unfortunately your Registrar also needed medical attention and went home sick with the flu before he accessioned the iguana. Put your pen and paper away! The medical records can be entered into ZIMS! You create an Incomplete Accession for the iguana. An Incomplete Accession requires only the taxonomy, sex type, birth date estimate and some related notes. You are able to enter the complete medical treatment, weights and other related data for the iguana. When the Registrar returns to work he accessions the iguana and associates that full accession with your Incomplete Accession, correcting the taxonomy, sex type and birth date if needed. All the data you recorded has now been transferred into the fully-accessioned animal record.



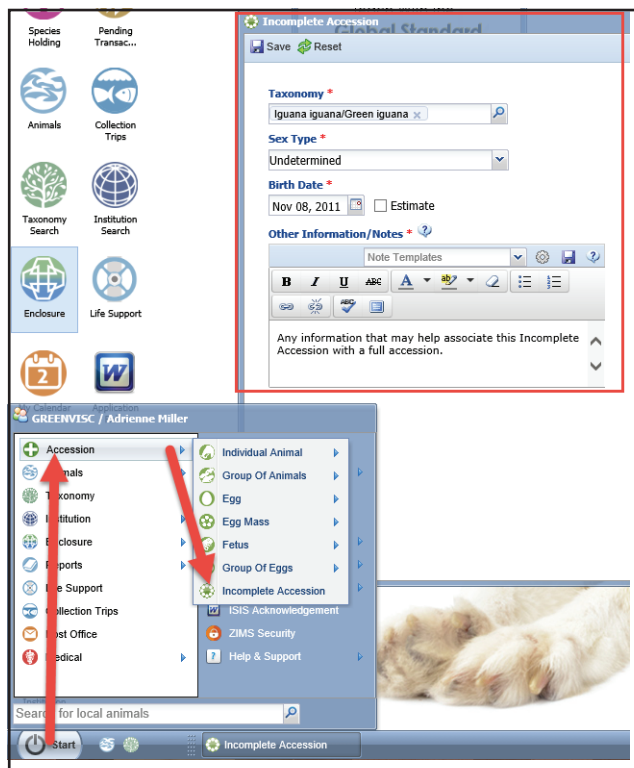
**They're counting on you for their medical care. We can help.**



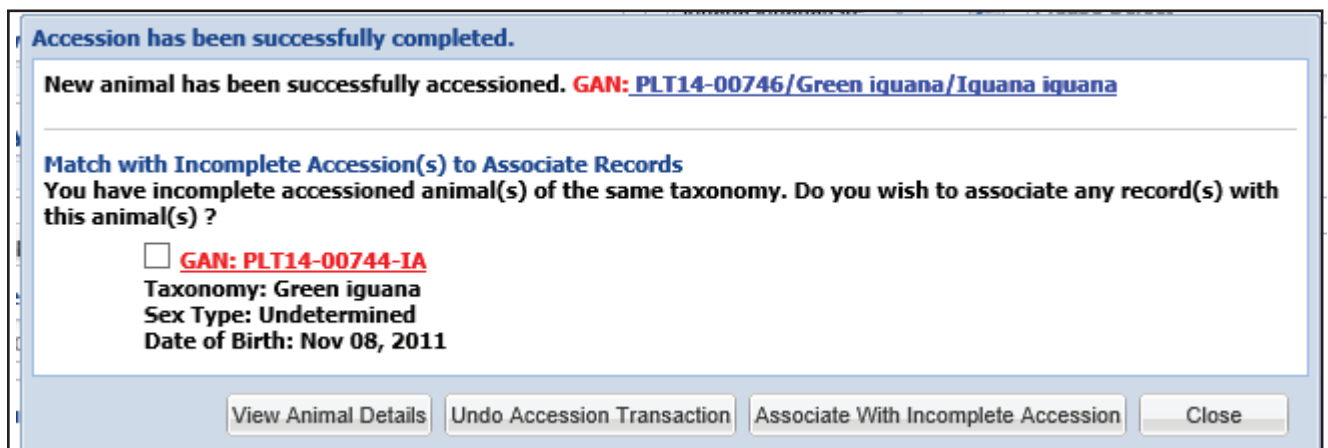
**ISIS**

**Information made easy.**

## Creating Incomplete Accessions



Start>Accession>Incomplete Accession



When a full accession is saved the application will find any Incomplete Accessions that may have been created for the animal. This is where you will associate the records. If any information is different between the two it can be corrected at this time. All of your medical information is copied into the full accession record.



ISIS

Information made easy.