

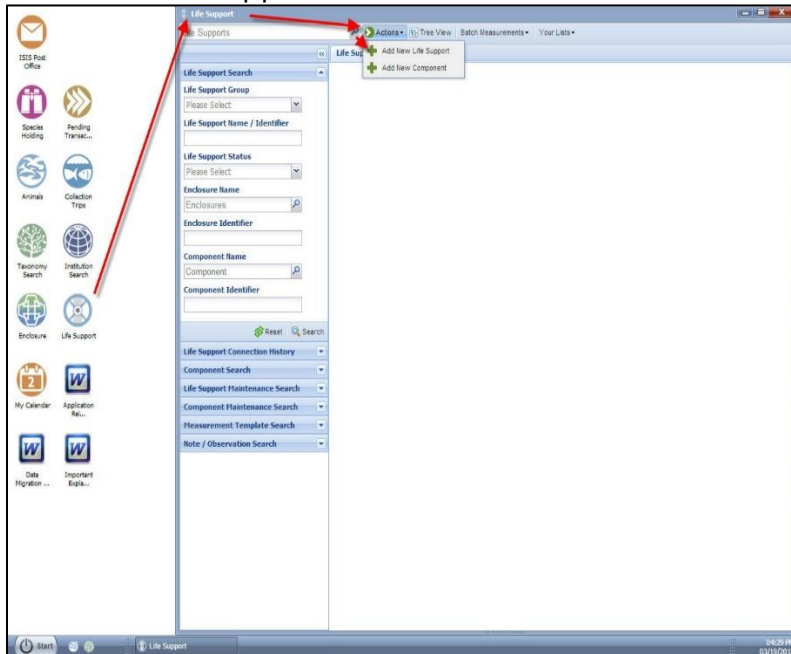
## Life Support-Add New

How to add a new Life Support to ZIMS

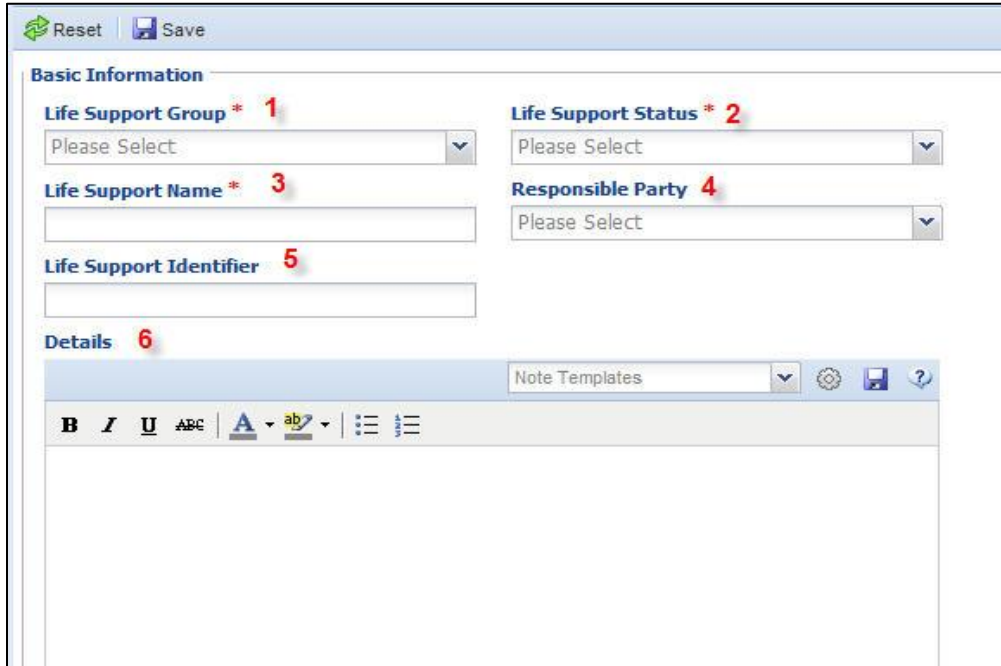
[Contact Species360 Support](#)

Life Supports help maintain the health of the animals in your collection. They are most common in aquatic enclosures but can also be used in terrestrial enclosures. You can create a simple Life Support and attach it to one or more enclosures or you can create a more complex one that includes the components that are attached to it.

To add a new Life Support, select Life Support icon > Actions > Add New Life Support or go to Start > Life Support > Actions > Add New.



It is the mission of Species360 to facilitate international collaboration in the collection and sharing of information on animals and their environments for zoos, aquariums and related organizations.



1. Life Support Group - Aquatic, Terrestrial or Incubation
2. Life Support Status- Operational, Shutdown or Retired
3. Life Support Name - Must be unique within your institution. The name can be used in quick search grid and will be displayed in templates.
4. Responsible Party - Sourced from your Staff list
5. Life Support Identifier - Usually a shortened version of the name. The identifier cannot be found in the quick search grid and will not display in the templates.
6. Details - Any information not gathered in the other fields

### **Best Practices Advice**

Think about what you name Life Supports, animals might change enclosures and enclosure names can change.

*Revised 23 November 2023*