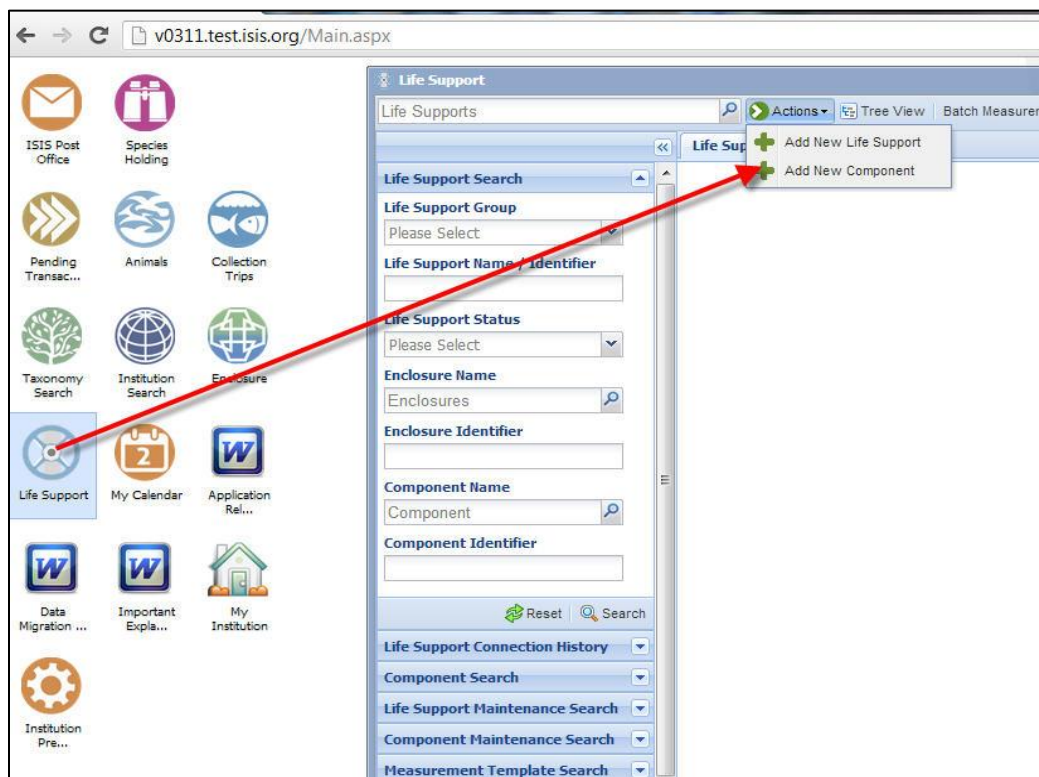


## Life Support-Component Inventory

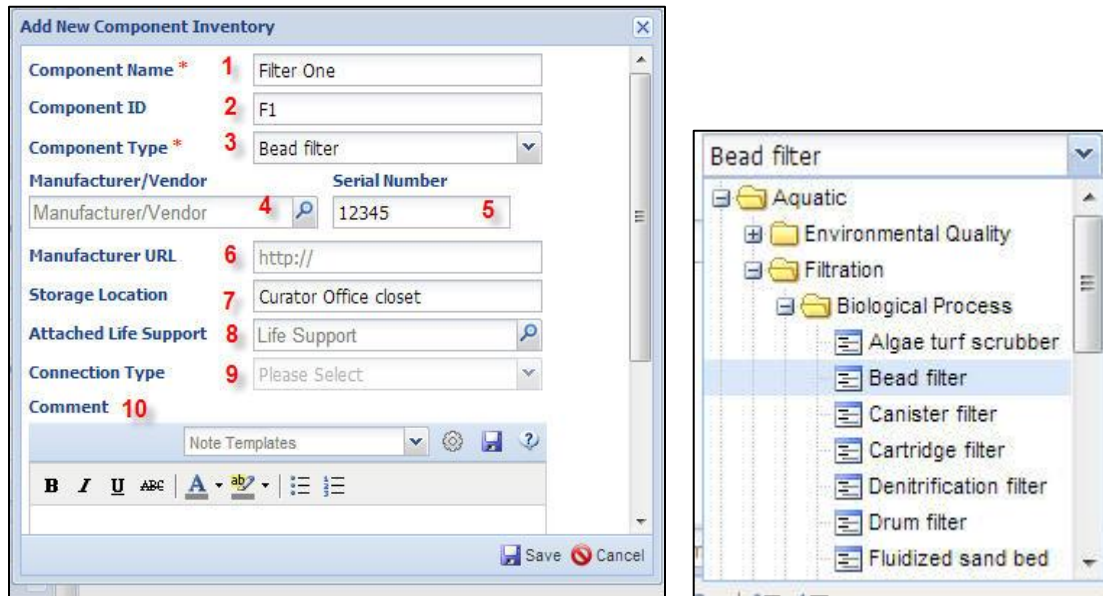
How to maintain an inventory of the components that make up your life supports.

[Contact Species360 Support](#)

To add a component to the inventory open the Life Support module > Actions > Add New Component:

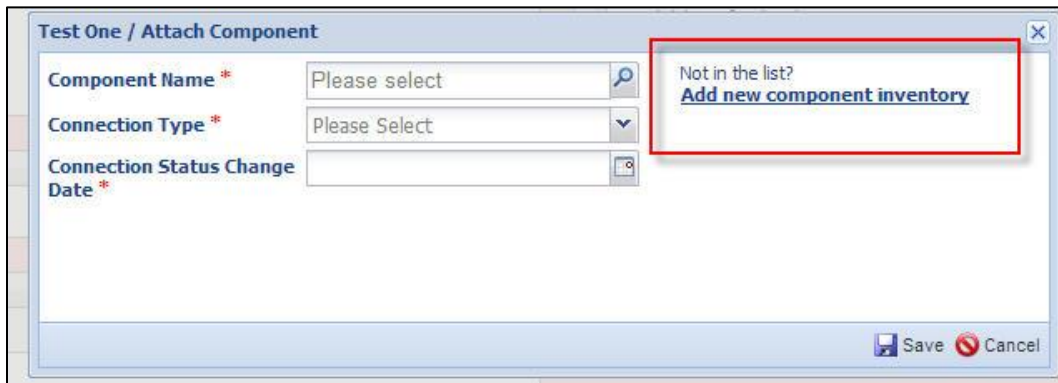
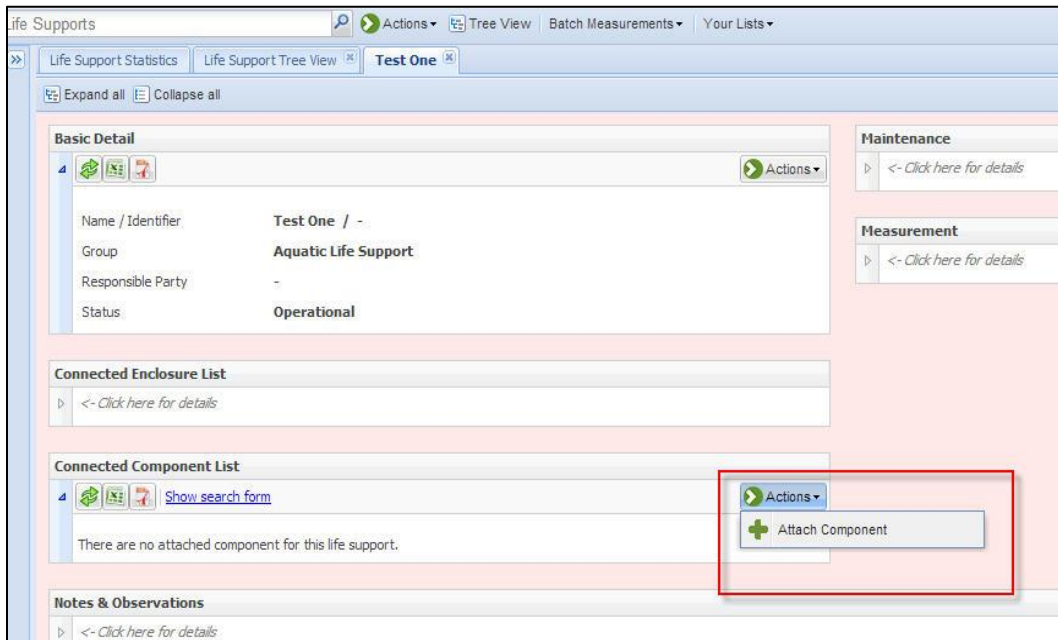


It is the mission of Species360 to facilitate international collaboration in the collection and sharing of information on animals and their environments for zoos, aquariums and related organizations.



1. Component Name - Must be unique within your inventory and can be edited.
2. Component ID - Shortened version of the name or other identification.
3. Component Type - Cascading dropdown, can select at any point.
4. Manufacturer/Vendor - Sourced from the Institution List and can be added as a Local Institution.
5. Serial Number - Helps you identify exact component you are using if you have multiples of the same type.
6. Manufacturer URL - This is useful should you need to re-order the same component or get parts or repairs.
7. Storage Location - Where the component is kept when not attached to a Life Support.
8. Attached Life Support - If the Life Support has already been created you can attach it here. You can also attach the component from within the Life Support screens.
9. Connection Type - This becomes an active field if you attach to a life support.
10. Comment - Additional details such as flow rate or voltage of a pump or wattage of a light bulb.

You can also add a component to the inventory from within the Life Support record:



*Revised 7 May 2019*

It is the mission of Species360 to facilitate international collaboration in the collection and sharing of information on animals and their environments for zoos, aquariums and related organizations.